

Modular Fleet Management
for your intralogistics

mobile
easykey®



Fleet analysis at a glance

FFZ-KPI

*Key Performance
Indicator*



What is the FFZ-KPI?

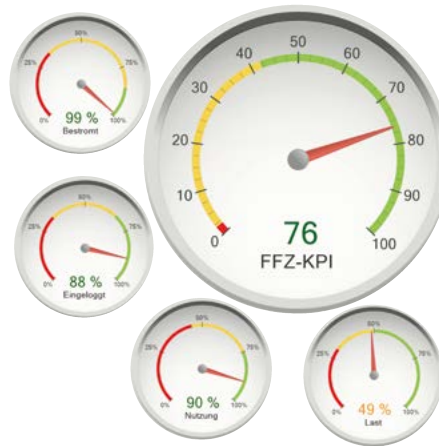
FFZ = Industrial truck, Forklift KPI = Key Performance Indicator

With the key figure (KPI), developed by Mobile Easykey, everyone can read the performance of the intralogistics fleet as a whole or per device – at a glance, with a clear key figure. Time-consuming analysis of different data from different sources is thus a thing of the past.

On average, 50% of logistics costs are accounted for by intralogistics processes. The industrial trucks, which cause a significant proportion of these costs, are often purchased and maintained according to gut feeling. Even if well-founded preliminary planning is carried out, it regularly happens, that a warehouse created on the drawing board can initially work optimally efficiently. But, over time organic growth leads to a greatly changed reality. The industrial truck-fleet no longer develops according to facts, but according to subjective perception.

From gut feeling to facts – at a glance

- Do I have enough industrial trucks?
- How are the industrial trucks used?
- How often are the industrial trucks for repair or maintenance?
- How busy are the industrial trucks?
- Am I using the fleet effectively?
- Are the legally required requirements met?



The basis for the FFZ-KPI is the OEE indicator (Overall Equipment Effectiveness = Overall Equipment Effectiveness). Mobile Easykey is the first software manufacturer to transfer this key figure to movable assets. Mobile Easykey brings two unique advantages from 25 years of experience:

1. Knowledge of companies and industries

Mobile Easykey provides software users with comparative and average figures for industries and company size. In this way, an evaluation of the FFZ-KPIs can become even more meaningful.

2. Manufacturer independence


The FFZ-KPI must be considered and evaluated in conjunction with the industry, device types and company size. Because every industry, every company is different and has different goals it needs different measures. This is where the many years of experience of the market leader in manufacturer-independent intralogistics fleet management come into play – which is shared with the users of the software!

The FFZ-KPI is a standard in the software Mobile Easykey Manager and comes at no extra charge!

Keep up to date

www.mobileeasykey.com



 Sales team
mobileeasykey.de/kontakt


FFZ-KPI
composition

The FFZ KPI is calculated
based on 4 parameters::

- powered
- logged in
- usage
- driven with load



Orders 
bestellung@mobileeasykey.de

Technical support 
khd@mobileeasykey.de

Mobile Easykey GmbH
Max-Planck-Straße 11
61381 Friedrichsdorf/Germany
mobileeasykey.com