



**Modular
fleet management**
for your intralogistics



manufacturer independent



Europe's



VDI interface ready



FFZ KPI



Software

MEKM – Mobile Easykey Manager

Mobile Easykey GmbH

Max-Planck-Straße 11 | 61381 Friedrichsdorf / Germany
Phone +49 6172 95 66 68 | mobileeasykey.com

ORDERS bestellung@mobileeasykey.de
TECHNICAL SUPPORT khd@mobileeasykey.de



Your sales team
www.mobileeasykey.de/kontakt



))) **Entry**

Access control and
basic analyses



p. 3

))) **Classic**

Access control and
extensive analyses



p. 5

- > Software Licence and Maintenance Agreement p. 9
- > Software Access Rights p. 10
- > Add-on: Finance and Statistics p. 11
- > Add-on: Indoor and Outdoor Locator p. 12
- > Add-on: CO2 calculator p. 13
- > Add-on: AI based personal protection p. 14

Mobile Easykey Manager (MEKM) – manufacturer-independent fleet management software GDPR-compliant, 6-fold data protection

The Mobile Easykey Manager (MEKM) software is the heart of the system. **On the one hand, it is used to manage the fleet and its users. On the other hand, the software collects data and processes it into valuable statistics and analyses.**

The Mobile Easykey Manager is based on MSSQL and is intuitive to use. The software can be made available on one or more workstations - with different authorizations. With Easy Translate, the software can be easily translated into any language. The software is currently available in German, English and Dutch.

Data, data, data!

No other fleet management system collects and delivers as much data as Mobile Easykey.

The software is secure, GDPR-compliant, it meets VDI standard 4458 and all data stays with you – instead of in any cloud.

For pure access control, there is the MEKM smart version, which is used in conjunction with the smart lock 1 or 3 module.

The software can be purchased or rented as a license model. In combination with a maintenance and license agreement, you receive valuable services.

))) **Entry**

*Access control and
basic analyses*

MEKM smart



))) **Entry**

Access control and basic analyses

MEKM smart



Features

Data protection

- Works council password



Vehicle management

- Registration and administration of vehicles
- Creation of a UVV alarm

Driver management

- Record drivers with expiry date and G25 (occupational health check)
- Assignment of Personal Transponders so that only vehicles that are necessary for the work and for which the driver has *access rights* can be operated

Documentation

- Logbook for recording all operations with time stamp (protected by operating rights from unauthorised access)

Other features

- Fulfillment of the requirements of the VDI standard 4458 (fleet management for forklift trucks)
- Automatic, bi-directional data transfer via Wi-Fi, Bluetooth, mobile or cable (depending on the equipment of the module)
- Easy Translate for translation into any language
- Manual back-ups

One-time purchase	✓
Monthly software maintenance/reporting	✗
Updates included	✗
Security updates: 2 years	✓
Support for the current version	✓
GDPR compliant	✓
VDI 4458 compliant	✓
Individual operating rights	✗
Works council password	✓
Vehicle management	✓
Vehicle types and groups with standardized settings	✗
Vehicles according to company structure (locations, departments, etc.)	✗
Driver management with personal transponder, expiry date, G25 date entry	✓
Documentation: logbook with time stamp	✓
Document management	✗
UVV date entry	✓
UVV and maintenance with alarms	✗
Usage and switch-on hours	✓
Basic statistics, exportable	✗
FFZ-KPI	✗
CO2 calculator	✗
Crash profiles und alarms	✗
Training management	✗
Master transponder	✗
Workshop mode and transponder	✓
Automatic bidirectional data transfer	✓
Easy Translate	✓
Rest API: ERP interface	✗
Back-up manual	✓
Back-up automatic	✗
Batteriemanagement	✗
Event messages, depending on sensor (e.g. oil pressure, electrolyte level, etc.)	✗
Add-on: Finance and Statistics	✗
Add-on: Indoor and Outdoor Locator	✗
Add-on: AI based personal protection	✗

))) **Classic**

*Access control and
extensive analyses*



))) **Classic**

Access control and extensive analyses

MEKM



NEW!

AI based personal protection

Intelligent and secure

Critical encounters between people and vehicles cannot always be avoided—but they can be intelligently controlled. That is why we are expanding our portfolio with an embedded AI camera that brings modern safety directly into the vehicle.

The camera detects people in real time, reliably distinguishes them from other obstacles, and assesses distances directly at the vehicle. If a situation becomes critical, the system reacts immediately – through light signals or automatic speed reduction.

- ✓ AI-supported person detection in real time
- ✓ Active collision avoidance through automatic response
- ✓ Customizable detection zones & warning mechanisms
- ✓ Robust for industrial environments
- ✓ Flexible integration

Features

Data protection

- Assignment of operating rights for the software in accordance with the respective data protection guidelines of the company
- Works council password



Vehicle management

- Registration and administration of vehicles
- Breakdown of vehicles and machinery by group or type
- Creation of vehicle profiles with standardised settings for individual product classes, e.g. with setting of the time for the auto shutdown

Maintenance and UVV

- With this software feature for pro-active security, up to ten time-alarms can be configured per module (e.g. for the due date of a UVV test) and one limit for the cut-in and/or usage hours. When a time alarm is reached or a defined limit is exceeded, an alarm is automatically triggered. This is displayed in the information center and can appear as a pop-up window if desired, and/or sent to one or more e-mail addresses.
- In addition, an alert can be issued in good time before reaching the alarm limit. It is also possible to send an 'overdue message' by e-mail, e.g. to the security officer, if the alarm is not acknowledged accordingly.

Driver Management

- Record drivers with information such as driving permits by vehicle type and necessary training or examination, e.g. G25 (occupational health check), each with individually definable expiration data
- Assignment of Personal Transponders so that only vehicles that are necessary for the work and for which the driver has access rights can be operated

Documentation

- Logbook for recording all operations with time stamp (protected by operating rights from unauthorised access)

Analyses

- Recording/readout of usage and switch-on hours incl. forecast for optimum hourly utilization

))) **Classic**

*Access control and
extensive analyses*

MEKM



Illustration of the corporate structure

- Structure of equipment management according to the company structure (locations, companies, departments, etc.)

Crash profiles

- Creation of the individually definable three-stage crash profiles: light, medium and heavy (possible scenarios: logbook entry only, lighting up of the LEDs on the module, time-delayed shutdown)
- Possibility to notify individual- or all software users by pop-up or e-mail
- Easy to adjust thanks to included “Crash value determination” tool

Training management

- Important tool for compliance with legal regulations for (post-) training: use of driver management alarms and handling of complete training: from assigning drivers to check-in/check-out, from assigning Personal Transponder to documentation and archiving of complete instruction certificates.

Management of special transponders

- Assignment of Master Transponders for supervisors for activation after a crash and assignment of Workshop Transponders for maintenance employees, for transfer and work on vehicles in workshop mode.

ERP interface

- Data can be imported automatically or manually from any ERP into the financial tool if an export in CSV file format or via REST-API interface is possible

Other features

- Fulfillment of the requirements of the VDI standard 4458 (fleet management for forklift trucks)
- Automatic, bi-directional data transfer via Wi-Fi, Bluetooth, mobile or cable (depending on the equipment of the module)
- Easy Translate for translation into any language
- Document management for depositing e.g. service reports, logs, invoices, etc.
- Import and export of data, partly automated
- Manage all of a company's technical equipment, even without the Mobile Easykey module installed
- Notification of various events (e.g. oil pressure, electrolyte level; see also accessories: Event Tool)
- Automated back-ups after freely definable time period
- Automated mailing of individually configured reports on modules, users and batteries

))) **Classic**

Access control and extensive analyses

MEKM



Want to save on investment costs ?

Then rent our products!

Mobile Easykey for rent: for a smooth, secure introduction to modern fleet management

Whether access control, crash sensor, or complete package including software license: we will put together your individual fleet management package – without a high initial investment.

- Minimum term: only 6 months
- Full transparency and predictability

	Kauf	
One-time purchase	✓	✓
Updates included	✓	0
Security updates: 2 years	✓	✓
Support for the current version	✓	✓
GDPR compliant	✓	✓
VDI 4458 compliant	✓	✓
Individual operating rights	✓	✓
Works council password	✓	✓
Vehicle management	✓	✓
Vehicle types and groups with standardized settings	✓	✓
Vehicles according to company structure (locations, departments, etc.)	✓	✓
Driver management with personal transponder, expiry date, G25 date entry	✓	✓
Documentation: logbook with time stamp	✓	✓
Document management	✓	✓
UVV date entry	✓	✓
UVV and maintenance with alarms	✓	✓
Usage and switch-on hours	✓	✓
Basic statistics, exportable	✓	✓
FFZ-KPI	✓	✓
Crash profiles und alarms	✓	✓
Training management	✓	✓
Master transponder	✓	✓
Workshop mode and transponder	✓	✓
Automatic bidirectional data transfer	✓	✓
Easy Translate	✓	✓
Rest API: ERP interface	✓	✓
Back-up manual	✓	✓
Back-up automatic	✓	✓
Batteriemangement	✓	✓
Event messages, depending on sensor (e.g. oil pressure, electrolyte level, etc.)	✓	✓
Add-on: Finance and Statistics	0	0
Add-on: Indoor and Outdoor Locator	0	0
Add-on: CO2 calculator	0	0
Add-on: AI based personal protection	0	0



Software licence and maintenance agreement: all-round carefree!

Your benefits

Always up-to-date

The Mobile Easykey hardware has proved its high reliability and longevity with customers in tough conditions thousands of times. Software, however, is basically a „Living product“, its continuous improvement and further development also helps the hardware – which can thus be used better and more diversely.

Buy or rent?

You decide whether you want to buy or rent our software in the future. Though, we do not simply offer you a license model, but a complete maintenance contract

All-round carefree

You pay a fixed amount - per vehicle, per month. In addition, there is a monthly flat rate per Mobile Easykey instance. For this we ensure the smooth functioning of the software Mobile Easykey Manager (MEKM) in your company.

Included services

MEKM Software

- Use of the complete software accord. to the terms of the Software licence and maintenance agreement
- **ohne Aufpreis enthalten:** Software packages 1 and 2

HelpDesk

- Response time within 4 hours
- Standby on weekdays (Mon-Fri) from 7am to 5pm
- Restore function in the event of total failure within 24 hours (via remote maintenance, if a back-up is available)
- Clearing of disruptions within 48 hours (via remote maintenance)

Software Updates

- Download link for a free update, at least once a year
- Update support, max. twice a year

Move/Change MEKM Server

- Support max. twice a year

Firmware Updates

- According to the terms of the Software licence and maintenance agreement

Function Check

- 1x monthly check for the trouble-free functioning of MEKM on your systems



Software Access Rights: 6-fold data protection

By defining access rights in the Mobile Easykey Manager, it is possible to completely control the operation- and display options. The GDPR principles „Privacy by Design“ and „Privacy by Default“ were already taken into account during the development of the Mobile Easykey software. The GDPR compliance of the software has been independently tested and confirmed (test report: www.mobileeasykey.de/download).

Defined are

- different users
- with different roles as well as
- several separate areas with different access / operator or display rights

Double password protection

In 2018, the so-called works council password was introduced: personal data is only visible through double authentication! This system is data protection compliant and receives a very high approval from works councils! The change log can be used at any time to reconstruct who made which changes.

GDPR Principles: It's about

- the harmonisation of relevant EU regulations
- better protection of the privacy of each individual
- the preservation of „power“ over personal data
- the regulation of data protection in companies and institutions

Legal, fair and transparent: Personal data must be collected, processed and stored in a legal, fair and transparent manner.

Minimized: The principle is: as few data as possible, as much as necessary.

Unambiguous and legitimate: The purpose of data collection and storage must be clear, purposeful and legitimate.

Exact and up-to-date: Personal data must be correct and up-to-date. Necessary corrections or deletions must be made immediately.

Limited time: Data may only be stored as long as it is required by its purpose.

Confidential: Technology and organization of data handling must ensure adequate security. All technically and organizationally precautions must be taken against loss, theft, destruction, damage or unauthorized use of personal data.



1. Individual operating rights for each user.
2. Automated pseudonymisation of personal data according to defined operating rights for each user (according to customer specifications).
3. Automated anonymisation of logbook data (according to customer specifications).
4. Automated deletion of logbook data (according to customer specifications).
5. Works council password to protect all personal data.
6. All data remains in the company and does not end up in some cloud anywhere in the world.



Add-on Finance and Statistics

- Included at no extra cost when you sign a software licence and maintenance agreement.
- This module is not available for the MEKM smart.



Finance

The add-on Finance of the Mobile Easykey Software provides an accurate overview of the costs for each vehicle. The usage hours are set in relation to the costs. You can enter and evaluate costs in various categories. Everything is customizable to your needs. Digital invoices from many manufacturers can already be imported. With various alarms, you can be warned at any time, if anything ,runs out of control'.

Statistics

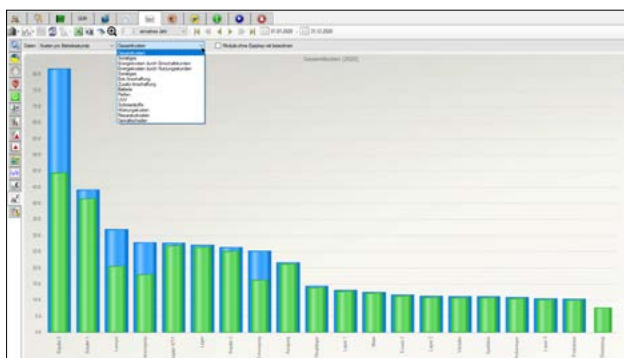
The add-on statistics displays prepared, visualized statistics that are automatically updated in the background with each new logbook entry. This gives you an up-to-date status of your fleet at all times. All graphics and raw data can of course be exported and used for presentations or further processing.

Monthly update reports

In coordination with the add-on Statistics Live, you will receive graphically edited calendar monthly updated reports at a glance. If desired, a direct comparison can be made between vehicle types and/or manufacturers. You can choose between individual vehicles, vehicle groups or entire locations. The more data is entered, the more clearly a trend can be foreseen. This makes it easier to make decisions for purchases, replacements or repairs. All this is done automatically.

Cost Types and Cost Units

With the add-on Finance you can manage investment costs, depreciation, rental, leasing, full service, costs of machinery breakdown insurance, damage, repairs, maintenance, UUV or any individual defined cost types and cost units. From the data, the software automatically calculates a financial status – depending on your requirements for hours of operation and/or hours of use of your fleet. The manual entry of costs and invoices is just as possible as an automatic import via defined interfaces.





Add-on Indoor and Outdoor Locator

- Included at no extra cost when you sign a software licence and maintenance agreement.
- This module is not available for the MEKM smart.

Indoor Locator

A cost-effective and extremely easy-to-implement variant of indoor tracking provides this access point-accurate **Wi-Fi or Bluetooth** location. The more access points are installed, the more accurate the device is to locate. The fleet manager thus has a comprehensive overview of the entire operation. Which device is in which area in which state: logged in, powered, in crash, in workshop mode, etc. The only requirement is a current Mobile Easykey Wi-Fi or Bluetooth module. This solution comes without retrofitting and without interfering with the hardware!

Outdoor Locator

With our **Mobile / GPS** module, you have the option of locating machines outdoors. We regularly record the position data and save it in the log book if required. With a simple click on the position data you can see the exact position e.g. display on Google Earth.



*Example
Outdoor Locator*



> **Add-on** CO2 calculator

- Included at no extra cost when you sign a software licence and maintenance agreement.
- Für die MEKM smart steht dieses Modul nicht zur Verfügung.

It's all about the climate – even in intralogistics.

With the CO2 calculator in the Mobile Easykey software, you can already evaluate the footprint of your intralogistics vehicles – per vehicle, shift, location, etc. Use Mobile Easykey to determine important data for your CO2 balance.

Data, data, data

- ✓ Comply with ESG guidelines
- ✓ Minimize CO2 emissions easily
- ✓ CO2 calculator with MEKM
- ✓ Avoid administrative fines





Add-on

Add-on: AI based personal protection

- Included at no extra cost when you sign a software licence and maintenance agreement.
- This module is not available for the MEKM smart.

Intelligent person detection

The smart solution for greater distance – safety right in the vehicle

Critical encounters between people and vehicles cannot always be avoided – but they can be intelligently controlled. That's why we are expanding our portfolio with an embedded AI camera that brings modern safety right into the vehicle.

The camera detects people in real time, reliably distinguishes them from other obstacles, and assesses distances directly at the vehicle.

If a situation becomes critical, the system reacts immediately – with light signals or automatic speed reduction.

- ✓ Distinguishes people from other obstacles in real time
- ✓ Warns of collisions
- ✓ Suitable for harsh environments
- ✓ Customizable detection zones
- ✓ Warning mechanisms
- ✓ Flexible integration into the vehicle
- ✓ Real-time detection of people and objects

