



mobile
easykey®

your appliance guard

User Manual

Mobile Easykey Communicator
Version 3.5

Reduce impact damage, optimize fleet of machinery

GREATER SAFETY AT LOWER COSTS



Find out more

Domnick+Müller GmbH+Co. KG
Max-Planck-Straße 11
61381 Friedrichsdorf
hotline@mobileeasykey.de

www.mobileeasykey.de

**domnick
+müller** 

Inhaltsverzeichnis

1	Mobile Easykey Communicator.....	2
1.1	The main window.....	3
1.1.1	The status bar	3
1.1.2	The menu.....	3
1.1.3	Data	3
1.1.4	Plug And Play	4
1.1.5	Description of the individual columns.....	4
1.2	Execute orders	6
1.2.1	Module exchange and initialisation orders	6
1.2.2	Normal orders	7
1.3	Return orders to the Manager.....	7

1 Mobile Easykey Communicator



The Mobile Easykey Communicator can be directly launched from that point (or for example from a USB stick).

Simply double click on the file **MobileEasykeyCommunicator.exe**.

By only using an older Windows version (Windows XP) it might be necessary to install .NET Framework 2.0 beforehand. Equally, the USB driver for the Mobile Easykey connection cable must be installed. Thus, when plugging in the (USB) cable, a COM Port will automatically be generated and then can communicate with the modules via the Mobile Easykey Communicator.

To install .NET Framework 2.0 and/or the USB driver, double click on the file **MobileEasykeyCommunicatorSetup.exe**. The set-up programme automatically recognizes whether the necessary components already exist and only installs them only when required.

Note:

Administrator rights are necessary for the installation of the .NET Framework 2.0 or the USB driver

Now double click on the file **MobileEasykeyCommunicator.exe**.

1.1 The main window



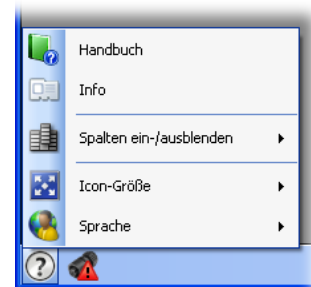
All the orders, which are found in the same directory as in the Communicator, are automatically loaded.

1.1.1 The status bar

- 🔍 Click on this button to access the menu (See 1.1.2 The menu).
- 🔌 Click on this button to directly reach configuration of the desired COM Ports (See 1.1.3 Data). As a rule, the attached (USB) cable is nevertheless detected and a configuration is not necessary (see 1.1.4 Plug And Play).

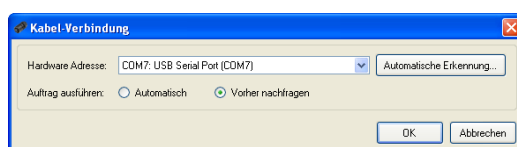
1.1.2 The menu

- 📖 Opens this documentation.
- 📄 Displays information (Version's number, copyright, etc.) about this product.
- 📊 With this menu item, the single columns can be (see also 1.1.5 Description of the individual columns) shown or hidden to personalize the display.
- 📏 With this menu item, you can change the size of displayed icons (pictures).
- 🌐 With this menu item the languages of this programme can be changed. This menu item can only be shown if at least 2 languages are available.



1.1.3 Data


Click in the toolbar (see 1.1.1 The status bar) on the symbol 🔌 (or ⚠️) to activate the configuration of the cable connection.




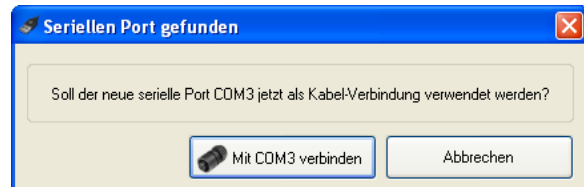
Enter the **Hardware Address** (COM Port), to the module which (which is to be programmed or selected) should be attached. If you are using a USB cable, then you can also click on the button **Automatic Detection** and then plug the USB cable in

to the PC. The COM Port will automatically detect it. With **Run Order** you can specify whether the available orders for the respective attached module should be executed, or whether the Mobile EasyKey Communicator "is asked before each order or whether it should be executed.

1.1.4 Plug And Play

If the Mobile Easykey Communicator already has a USB cable attached when it launches, as a rule, it will be automatically detected. However, if it is not detected, the symbol  will be displayed in the bottom left corner. If this happens, just unplug the USB cable and then plug it in again.

If no COM Port is set up or the previously used COM Port does exist anymore (the symbol  will be displayed in the bottom left corner). Then the next attached USB device will be automatically detected. If it is to do with the required USB device, confirm the respective dialog or select **Cancel** to use the new COM Port which is **not** in the Mobile Easykey Communicator.



1.1.5 Description of the individual columns

Database:

The "Mobile Easykey Communicator" can display several different databases at the same time. In this column the name of the respective database is displayed.

Module:










Displays the names of the respective modules.






Order:

Assigns an order category (=Update-, =Status- or =Information-Order) as well as an internally assigned serial order number

Content

Here the various icons of the contents' page of these features are listed:

 First Initialisation	This is the very first order which the module forwards. This is the order which enables the "Mobile Easykey Manager" to get to know the module.
 Module Exchange	If the Mobile Easykey module is replaced in a vehicle, then the module cannot detect the module anymore. With the module replacement a order will be run in order to get it know it again.
 Storage Arrangement	With this order, the storage arrangement is modified in the module. Warning: the logbook memory in the module will be then deleted.
 Configuration	With this application, the configuration (e.g. the time-out of absence detection) is modified.
 Full-Update	With this application, all the users and masters (Transponder) are written in this module for the first time.
 Quick-Update	With this application, all the modified user- and master- data are written in this module.
 Read Status	With this application, the current module status is read out.
 Delete Crash	With this application, the module is released if it is in a crash status/state).
 Set Clock	With this application, the internal real-time clock is reset.







 Set operation hours	The counter for the operating hours is changed in the module with this feature.
 Read Logbook	Logbook data is read from the module with this application.
 Read Operation hours	The counter for the operating hours is read from the module
 Start Test-drive	With this feature a test-drive for the Crash+ Remote is started.
 End Test-drive	A test-drive is completed (as long as the test-drive was started) and the maximum value is readout with this application.

Depending on

The various update features can be independent of each other. In this case, the "Mobile Easykey Manager" has to follow the correct sequence. A quick update, for example, might depend on the carrying out of a full-update beforehand because this (the quick update) would override the modifications of the full - update.

Status:

Shows the current application status:

 Please Connect Module	The "Mobile Easykey Communicator" waits that this module is connected to the COM Port that was set in 1.1.3 Data . The feature is then automatically started.
 OK	The operation is completed.
 OK	The operation is complete and is saved on a data storage device(e.g. USB Stick)
 OK	The operation is completed and is mailed back to the sender.
 Invalid	This operation is invalid. For example a quick update might become invalid if (via another connection) a full-update was run.
 Error	An error occurs when an application is run.

Created on

Shows the date and time of when the order was created. If the date is today's date, then it only shows the time.

Last Change on

Shows the date and the time of when this order was last changed. Under certain circumstances additional partial-orders can be added to an already existing order. In this case, the date of this or the last modification is displayed here. If the date is today's date, then it only shows the time.

Execution started on

Shows the time and the date of when the execution (communication with the module) was initiated. If the date is today's date, then it only shows the time.

Execution completed

Shows the date and the time of when the execution communication with the module) was completed. If the date is today's date, then it only shows the time.

1.2 Execute orders

The "Mobile Easykey Communicator" saved applications are automatically launched as soon as you connect the respective module in 1.1.3 **Data** to the set COM Port.

1.2.1 Module exchange and initialisation orders

When exchanging modules and executing initialization orders, the respective module is not yet known by neither the "Mobile Easykey Manager" nor the "Mobile Easykey Communicator".

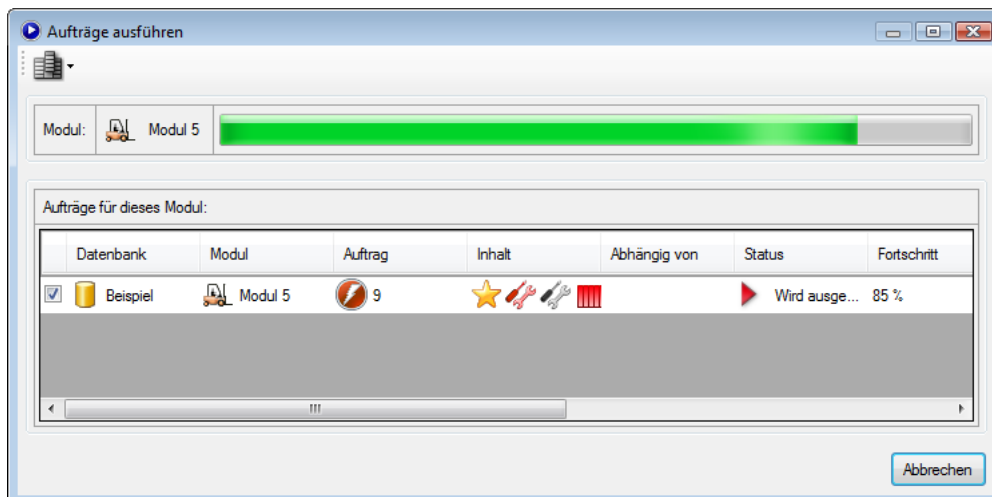
The module which is connected for the "Mobile Easykey Communicator" is new and still unknown. In this case, a dialog pops up where the currently available module exchange and initialization orders are listed. You must now manually select the currently attached module.



Click on **Module** to set the launching of the order.

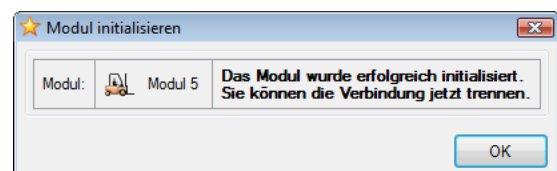
Note:

Make sure you that you that the correct module is connected and the correct order is selected!



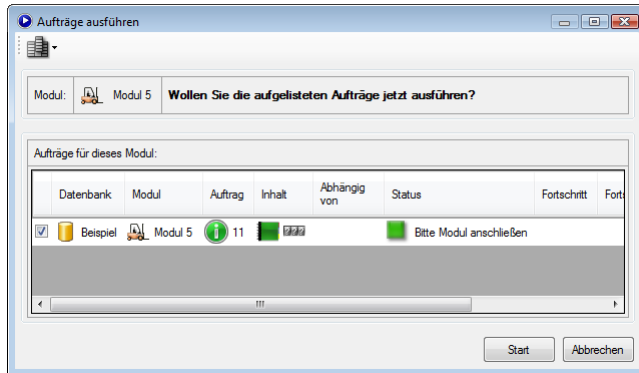
During the execution of the order, you will see this window running the order.

After the order is successfully executed, you will see the adjacent notification. This notification automatically disappears as soon as the connection is severed.



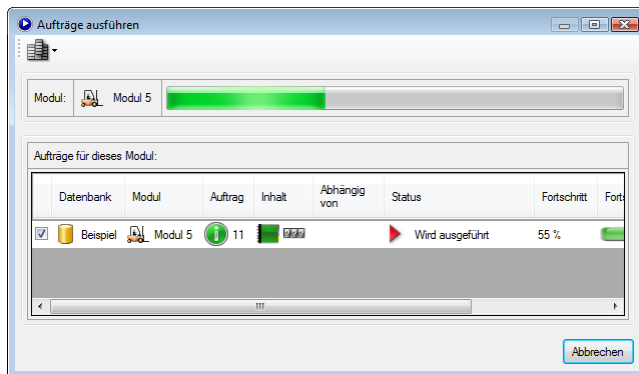
1.2.2 Normal orders

If orders exist for the connected module, then the module after connecting is automatically detected.

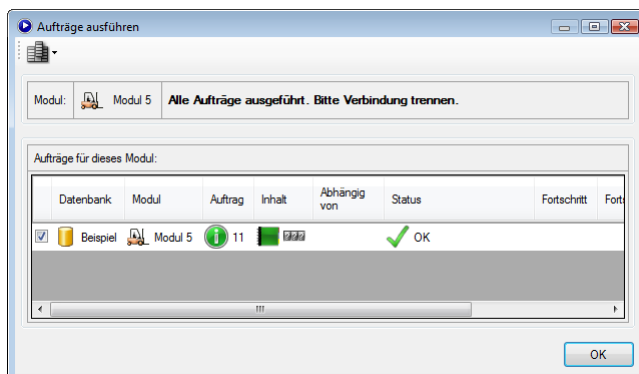


Click on **Start** to launch this application.

Depending on the configuration (see **1.1.3 Data**), the query is skipped and the application is immediately and automatically run (see opposite window).




During the running of the application, you will see this window.



If all the applications are run, then the connection to the module can be cut off. This window is automatically closed

1.3 Return orders to the Manager

After a order is successfully executed, this information must be transferred back to the Mobile Easykey Manager. The Mobile Easykey Communicator automatically saves all the necessary data in the respective order file (*.mekm).

Click on the button  in the Manager or on the subitem **Import Orders** from the menu **Edit** and select the executed order (e.g. from a USB stick). Thus, this will be copied with the "Mobile Easykey Communicator" executed orders, including the new data (e.g. readout logbook data), into the database and the order in the "Mobile Easykey Manager" is completed.